

MLS Area HW

Listings	This Month			Year-to-Date		
	Nov 2021	Nov 2020	Change	2021	2020	Change
Single Family Sales	40	27	+48.1%	319	333	-4.2%
Condo/TH Sales	2	1	+100.0%	14	12	+16.7%
Total Sales	42	28	+50.0%	333	345	-3.5%
New Homes Only	2	2	--	19	25	-24.0%
Resale Only	40	26	+53.8%	314	320	-1.9%
Sales Volume	\$37,858,711	\$13,870,427	+172.9%	\$216,053,718	\$172,519,055	+25.2%
New Listings	17	16	+6.3%	394	345	+14.2%
Pending	17	7	+142.9%	28	327	-91.4%
Withdrawn	1	2	-50.0%	27	35	-22.9%
Expired	--	--	--	--	--	--
Months of Inventory	1.0	0.9	+11.1%	N/A	N/A	--

Average	This Month			Year-to-Date		
	Nov 2021	Nov 2020	Change	2021	2020	Change
List Price	\$911,723	\$501,442	+81.8%	\$647,430	\$516,385	+25.4%
List Price/SqFt	\$400	\$207	+93.5%	\$304	\$229	+33.1%
Sold Price	\$901,398	\$495,372	+82.0%	\$648,810	\$500,055	+29.7%
Sold Price/SqFt	\$395	\$205	+92.9%	\$307	\$222	+38.4%
Sold Price / Orig LP	96.6%	97.8%	-1.2%	101.5%	95.4%	+6.4%
Days on Market	31	26	+18.4%	20	62	-67.9%

Median	This Month			Year-to-Date		
	Nov 2021	Nov 2020	Change	2021	2020	Change
List Price	\$549,500	\$374,488	+46.7%	\$450,000	\$375,000	+20.0%
List Price/SqFt	\$294	\$202	+45.3%	\$247	\$191	+29.3%
Sold Price	\$551,000	\$371,139	+48.5%	\$460,000	\$366,000	+25.7%
Sold Price/SqFt	\$295	\$200	+47.8%	\$253	\$189	+33.4%
Sold Price / Orig LP	98.0%	100.0%	-2.0%	100.0%	97.0%	+3.1%
Days on Market	17	9	+94.1%	6	30	-80.0%

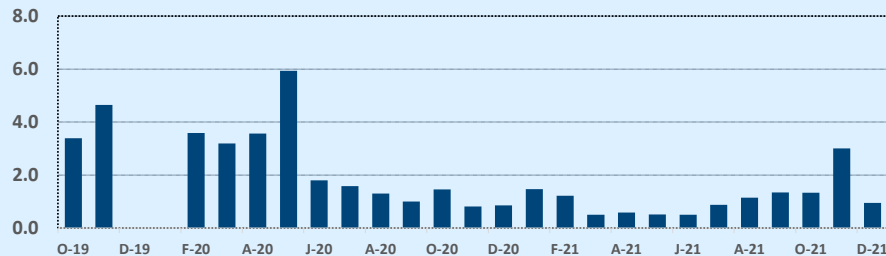
Residential Statistics

Independence Title

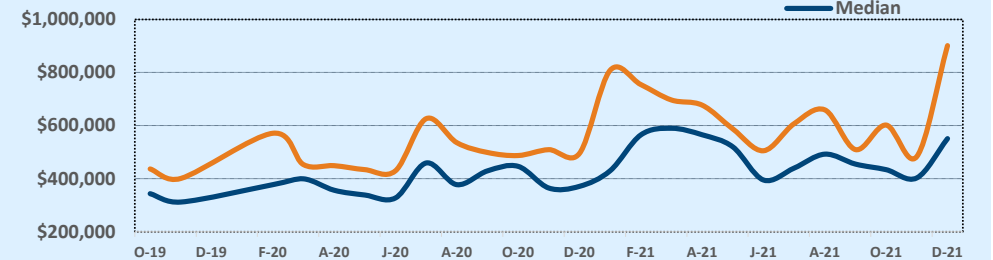
November 2021

Price Range	This Month			Year-to-Date		
	New	Sales	DOM	New	Sales	DOM
\$149,999 or under	--	--	--	3	4	6
\$150,000- \$199,999	--	--	--	8	7	26
\$200,000- \$249,999	--	1	10	5	5	6
\$250,000- \$299,999	--	2	26	19	21	15
\$300,000- \$349,999	3	1	11	49	33	19
\$350,000- \$399,999	3	3	5	56	47	9
\$400,000- \$449,999	--	2	5	28	36	8
\$450,000- \$499,999	4	3	4	29	23	19
\$500,000- \$549,999	3	--	--	26	23	19
\$550,000- \$599,999	1	1	14	18	18	37
\$600,000- \$699,999	2	--	--	31	30	21
\$700,000- \$799,999	3	--	--	21	16	14
\$800,000- \$899,999	1	--	--	12	13	17
\$900,000- \$999,999	1	1	28	12	6	38
\$1M - \$1.99M	6	1	13	64	43	23
\$2M - \$2.99M	1	--	--	8	4	182
\$3M+	1	--	--	5	4	43
Totals	17	42	31	394	333	20

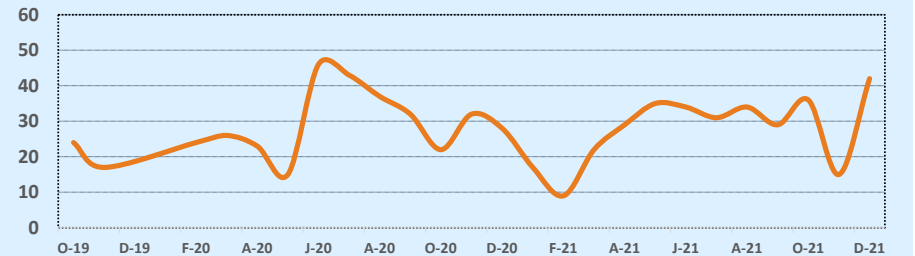
Months of Inventory - Last Two Years



Average & Median Sales Price - Last Two Years



Number of Sales - Last Two Years



Based on information from the Austin Board of REALTORS® (alternatively, from ACTRIS). Neither the Board nor ACTRIS guarantees or is in any way responsible for its accuracy. The Austin Board of REALTORS®, ACTRIS and their affiliates provide the MLS and all content therein "AS IS" and without any warranty, express or implied. Data maintained by the Board or ACTRIS may not reflect all real estate activity in the market.